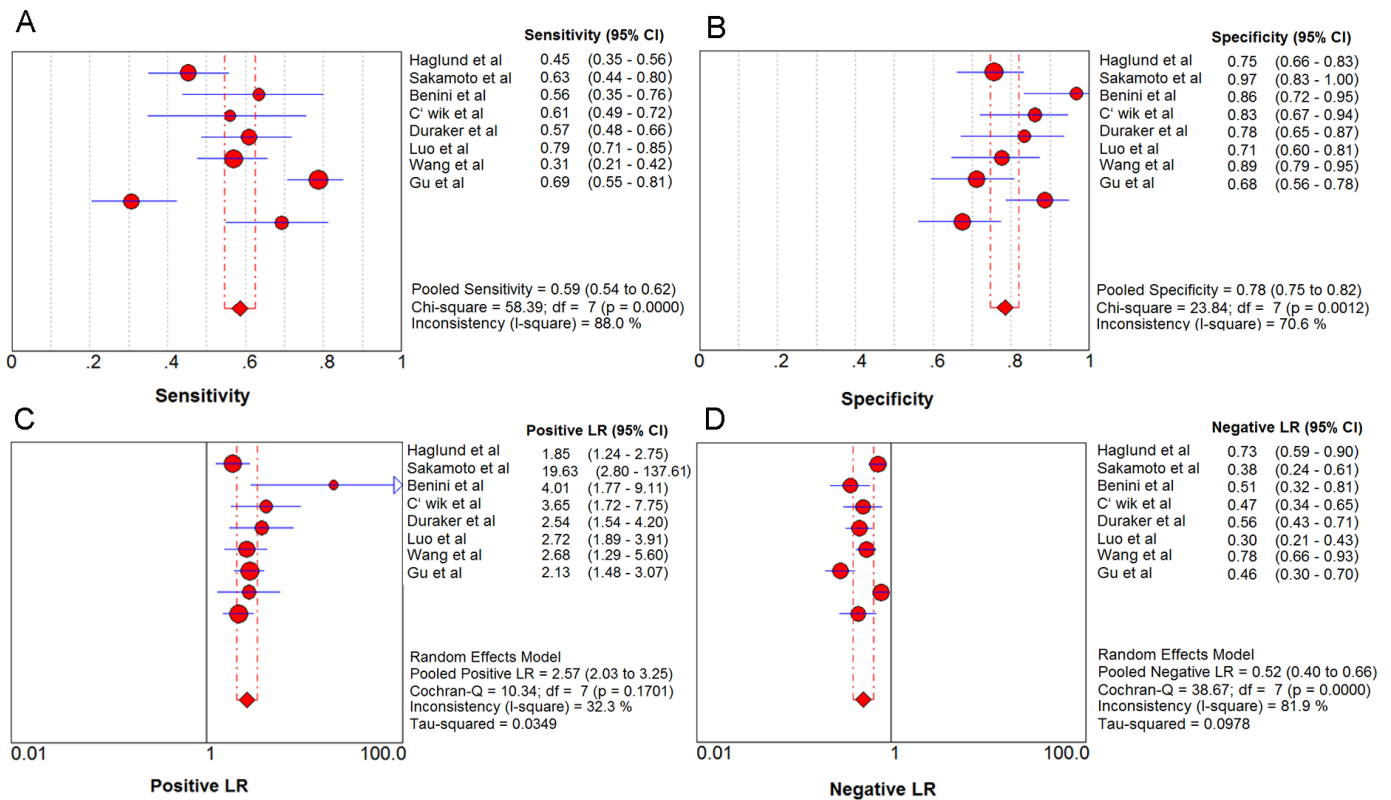


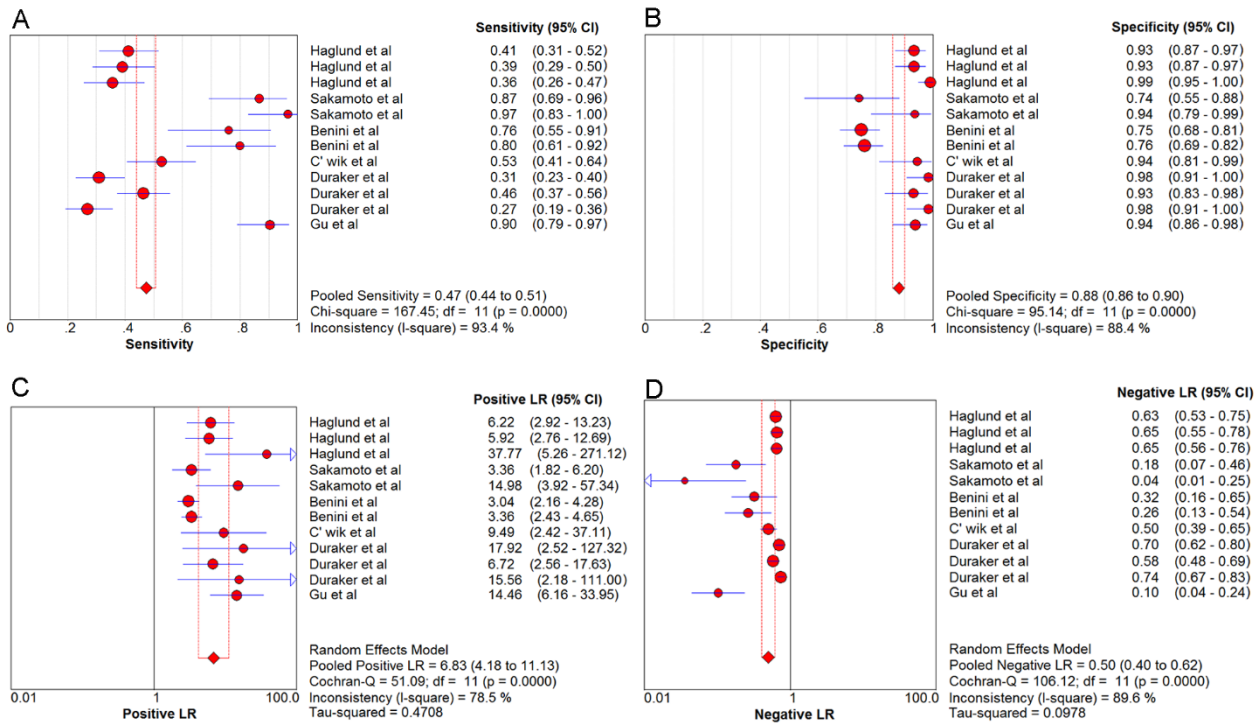
## Supplementary Figure S1

Forest plots of sensitivity (A), specificity (B), PLR (C) and NLR (D) for CA125 alone in the diagnosis of pancreatic cancer.



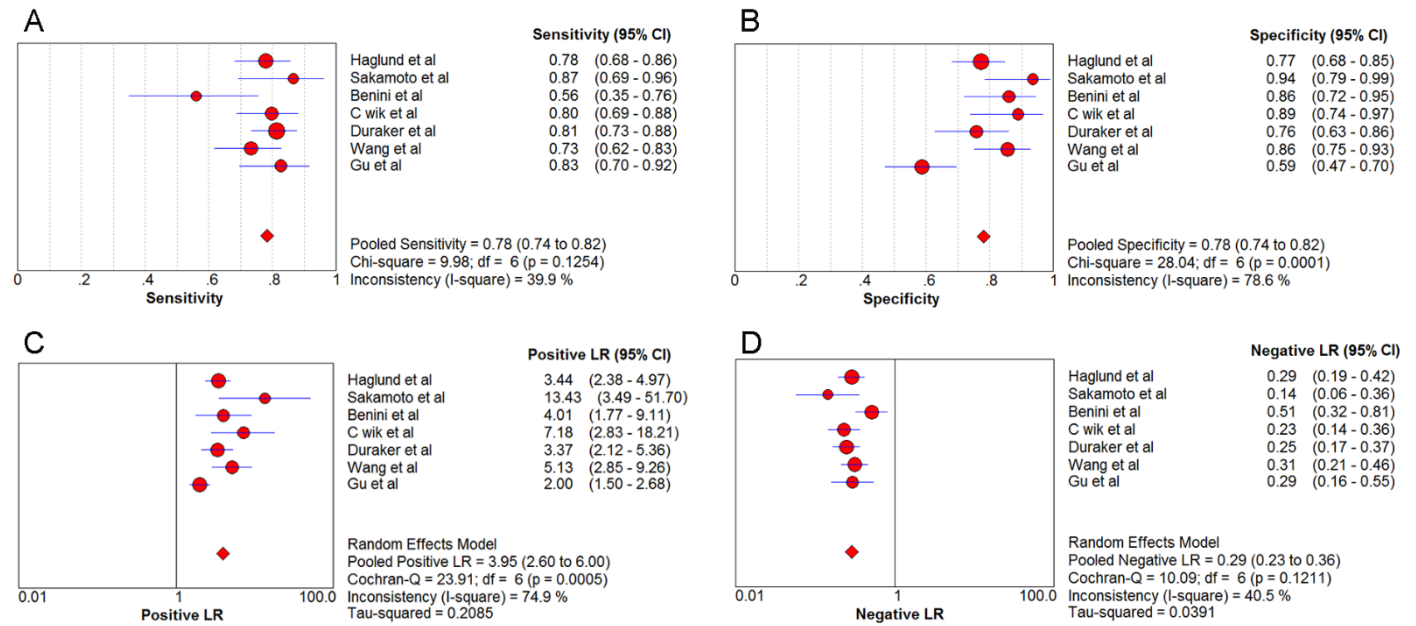
## Supplementary Figure S2

Forest plots of sensitivity (A), specificity (B), PLR (C) and NLR (D) for the CA125-based biomarker panel in the diagnosis of pancreatic cancer.



### Supplementary Figure S3

Forest plots of sensitivity (A), specificity (B), PLR (C) and NLR (D) for CA19-9 alone in the diagnosis of pancreatic cancer.



## Supplementary Figure S4

Summary receiver operating characteristic (SROC) curve for CA19-9 alone (A) and CA125 alone (B) in the overall diagnostic accuracy of pancreatic cancer.

