

Table S1. Sequences of ARID1B specific siRNA

ARID1B expression	Targeted Sequence
siRNA 1#	GAGCCAGTATGGACCACCA
siRNA 2#	GGCTCAGTATGGACCTCAA

Table S2. Comparison of ARID1B expression between patients with T1+T2+T3 disease and T4 disease

ARID1B expression	Characteristic		<i>p</i> *
	T1+T2+T3	T4	
Low	90	26	0.024
High	7	8	

* Fisher's exact chi-square test

Table S3. Univariate analysis of progression-free survival

Characteristics	PFS		
	HR	95%CI	P
Age	1.028	0.988-1.071	0.171
Gender			
Male	Ref.		
Female	0.756	0.230-2.483	0.645
Tumor size	0.922	0.758-1.122	0.418
Tumor grade			
Low	Ref.		
High	1.123	0.463-2.722	0.798
ARID1B expression			
Low	Ref.		
High	2.055	1.009-4.184	0.047
Adjuvant chemotherapy			
Negative	Ref.		
Positive	1.345	0.639-2.829	0.435
Disease pattern			
Primary	Ref.		
Relapse	1.470	0.730-2.959	0.280
Number of original tumor			
Solitary	Ref.		
Multiple	1.749	0.883-3.463	0.109
T stage			
Per increase in stage	1.592	1.052-2.408	0.028
Lymph nodes status			

Negative	Ref.		
Positive	2.998	1.487-6.044	0.002
TNM stage			
Per increase in stage	1.575	1.127-2.201	0.008

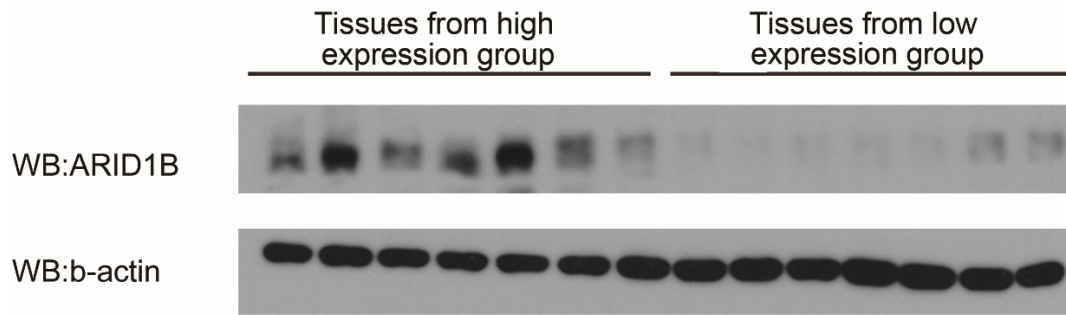


Figure S1. Validation of tissue microarray results with western blot method. Western blot analysis of ARID1B and b-actin in tumor tissues from high ARID1B expression group and low expression group.

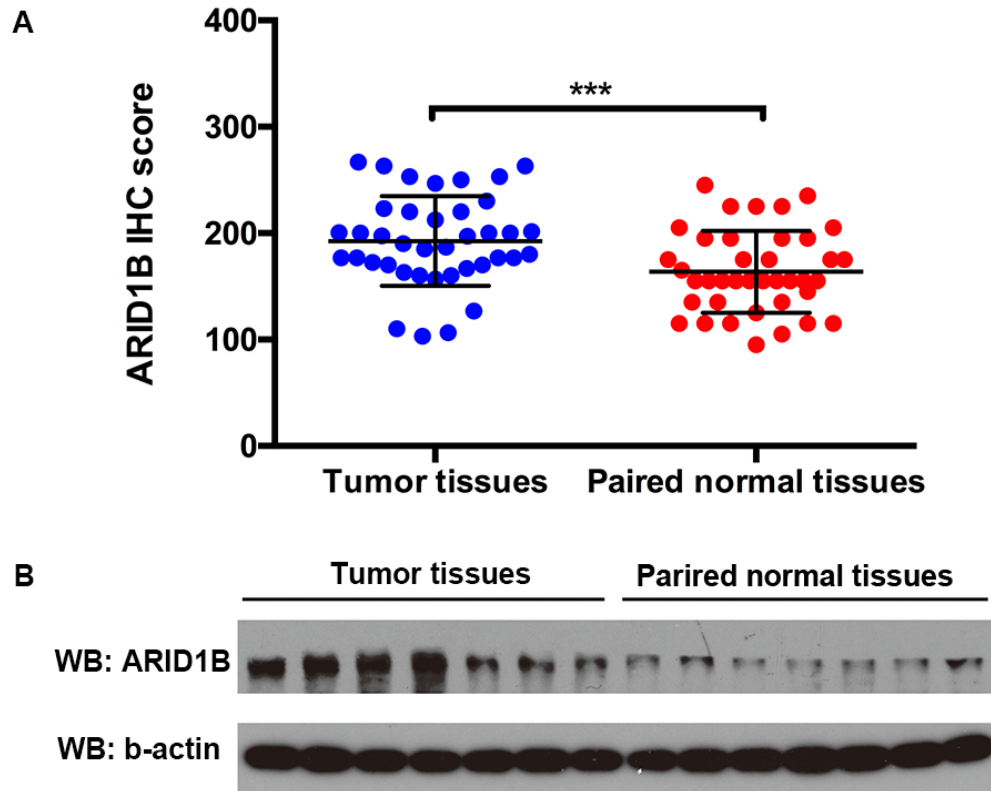


Figure S2. ARID1B expression levels between tumor tissues and paired adjacent normal tissues. Scatter plots for corresponding evaluated IHC score in paired tumor tissues and adjacent normal tissues ($n=39$). Horizontal lines: median and the interquartile range. The P value was calculated using Student's t -test (A). Western blot analysis of ARID1B and b-actin in paired tumor tissues and adjacent normal tissues. The right 7 lanes correspond one-to-one with the left 7 lanes (B). *** $P<0.001$

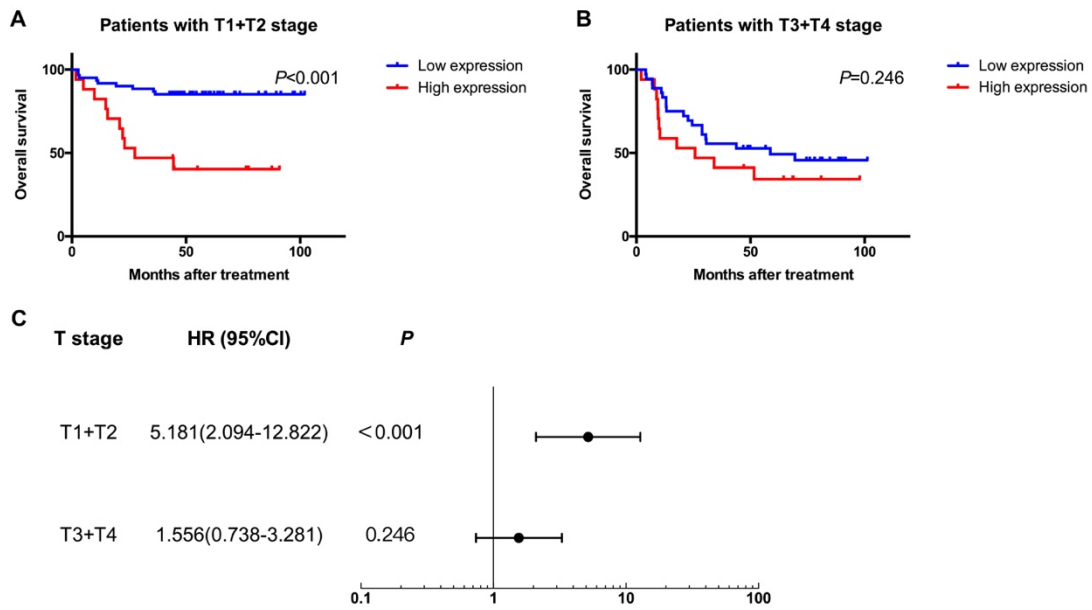


Figure S3. Subgroup analysis to assess prognostic value of ARID1B by T stage in patients with bladder urothelial carcinoma. Kaplan-Meier analysis of OS in patients with T1+T2 stage(A) and T3+T4 stage(B). HRs for OS probabilities based on ARID1B expression levels in T stage subgroups(C).

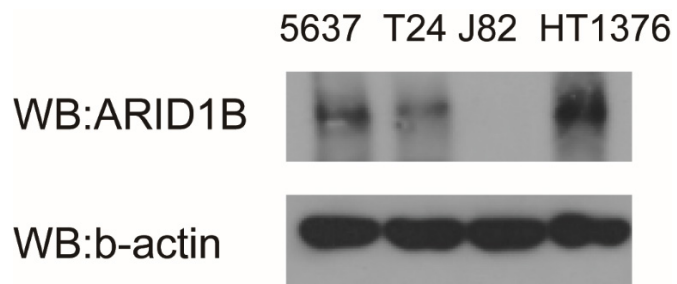


Figure S4. ARID1B expression levels in four human bladder cancer cell lines: 5637, T24, J82 and HT1376.