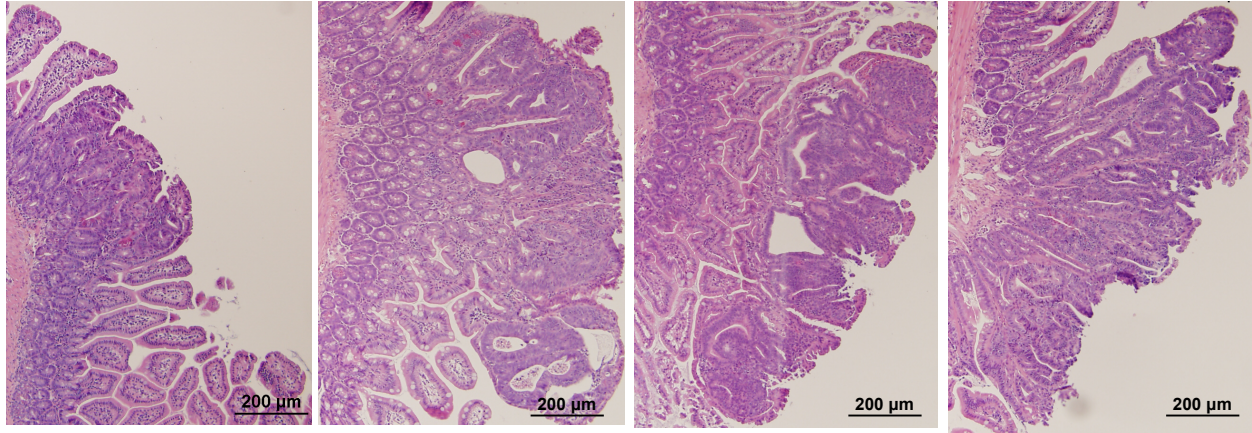
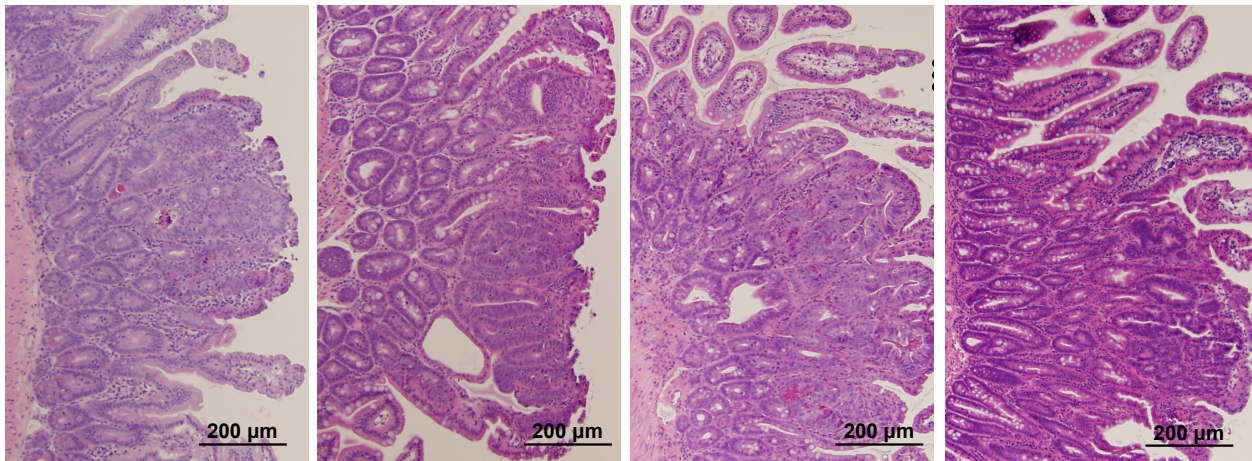


**Supplementary table 1.** Intestinal tumor frequency in F1 of irradiated as well as in directly irradiated male and female APC<sup>1638N/+</sup> mice.

<b>Groups</b>	<b>Intestinal tumor frequency (± SEM) in male</b>	<b>Intestinal tumor frequency (± SEM) in female</b>
Gr. I – F1 of No Parents Irradiated (NPI)	4.20 ± 0.48	3.35 ± 0.37
Gr. II – F1 of Both Parents Irradiated (BPI)	7.81 ± 0.91	5.45 ± 0.36
Gr. III - F1 of Male Parent Irradiated (MPI)	6.30 ± 0.33	4.45 ± 0.33
Gr. IV - Male direct parent irradiated (Male DPI)	5.55 ± 0.40	
Gr. V – Female direct parent irradiated (Female DPI)		3.60 ± 0.22



**Supplementary figure 1.** Formalin fixed paraffin embedded intestinal sections were stained with H&E and representative images are presented showing intestinal tumor size in male A) F1 of NPI group, B) F1 of BPI group, C) F1 of MPI group, and D) DPI group. Higher number of larger tumors was noted in F1 mice from BPI and MPI relative NPI.



**Supplementary figure 2.** Formalin fixed paraffin embedded intestinal sections were stained with H&E and representative images are presented showing intestinal tumor size in female A) F1 of NPI group, B) F1 of BPI group, C) F1 of MPI group, and D) DPI group. In F1 mice, higher number of larger tumors was observed in BPI relative to NPI.