
**Lovastatin Inhibits Cancer Stem Cells and Confers Enhanced Sensitivity to
Chemotherapy and Photodynamic Therapy in Nasopharyngeal Carcinoma**

Supplementary File

Figure S1. Enrichment of tumorspheres from NPC cells. 5-8F or 6-10B cells were cultured in ultra-low attachment plates in stem cell culture medium. The cells were passaged every six days with phase-contrast images captured every two days. P numbers on the right represent the different passage numbers after initial culture.

Figure S2. Flow cytometric analysis of CD44 as a cancer stem cell marker in NPC sphere-forming cells. The parental cells and sphere-forming cells derived from 5-8F or 6-10B cells were labeled with FITC-conjugated anti-CD44 antibody or FITC-conjugated isotype IgG and analyzed by flow cytometry. SFCs: Sphere-forming cells; PCs: Parental cells.

Figure S1

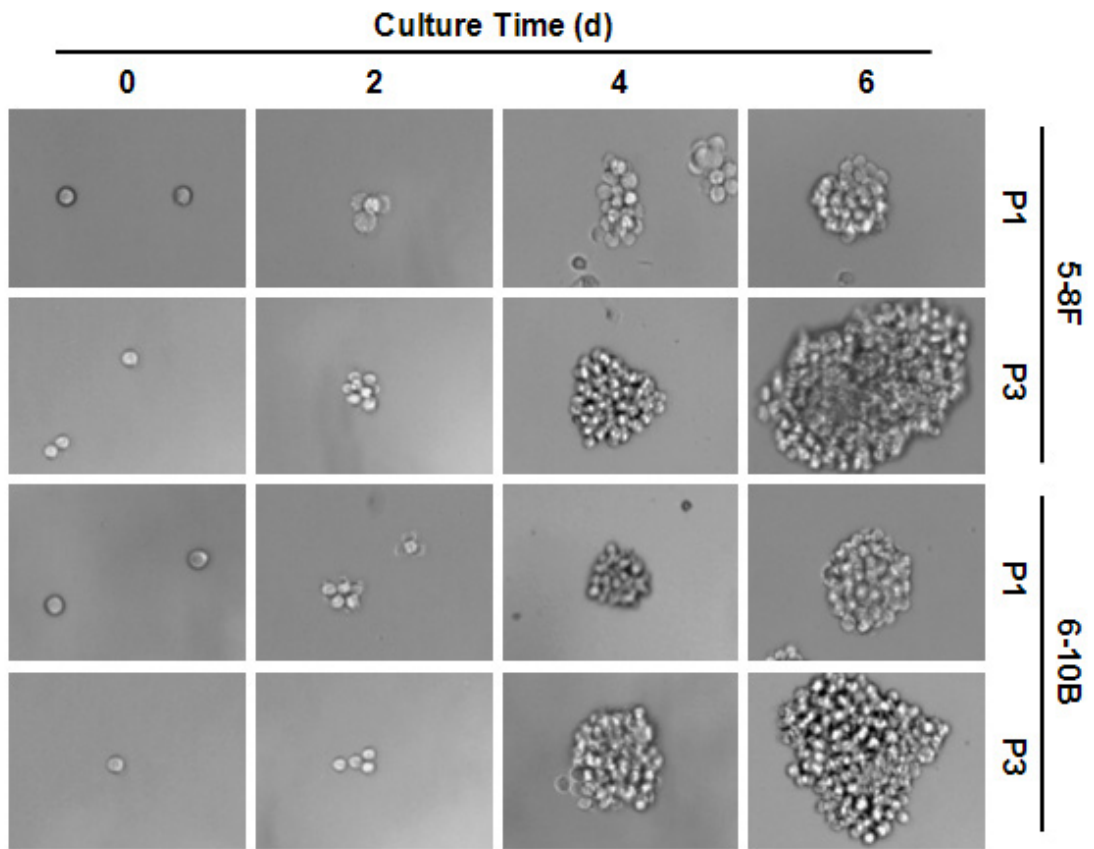


Figure S2