

### Supplementary Figure Legends

**Figure S1** The presence of VETC structure was negatively correlated with snail expression. (a) Immunohistochemistry results of snail in VETC<sup>-</sup> case (left), VETC<sup>+</sup> case (middle), and VETC<sup>±</sup> case (right). (b) Low expression of snail was more frequently found in VETC-present HCC tissues

**Figure S2** Two HCC cases with VETC<sup>±</sup> experienced hepatic metastasis via a VETC-dependent manner. (a) The vascular pattern type of intrahepatic metastatic lesion was VETC positive while its primary lesion has a mixed vascular pattern. (b) E-cadherin expression was positively correlated with the presence of VETC structure in both primary and intrahepatic metastatic lesion

Figure S1

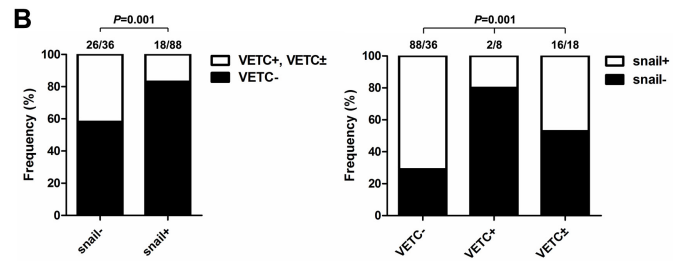
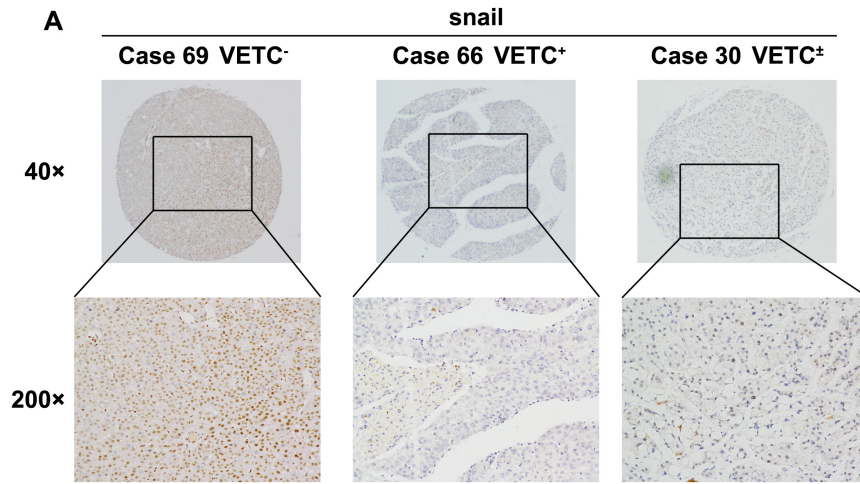


Figure S2

