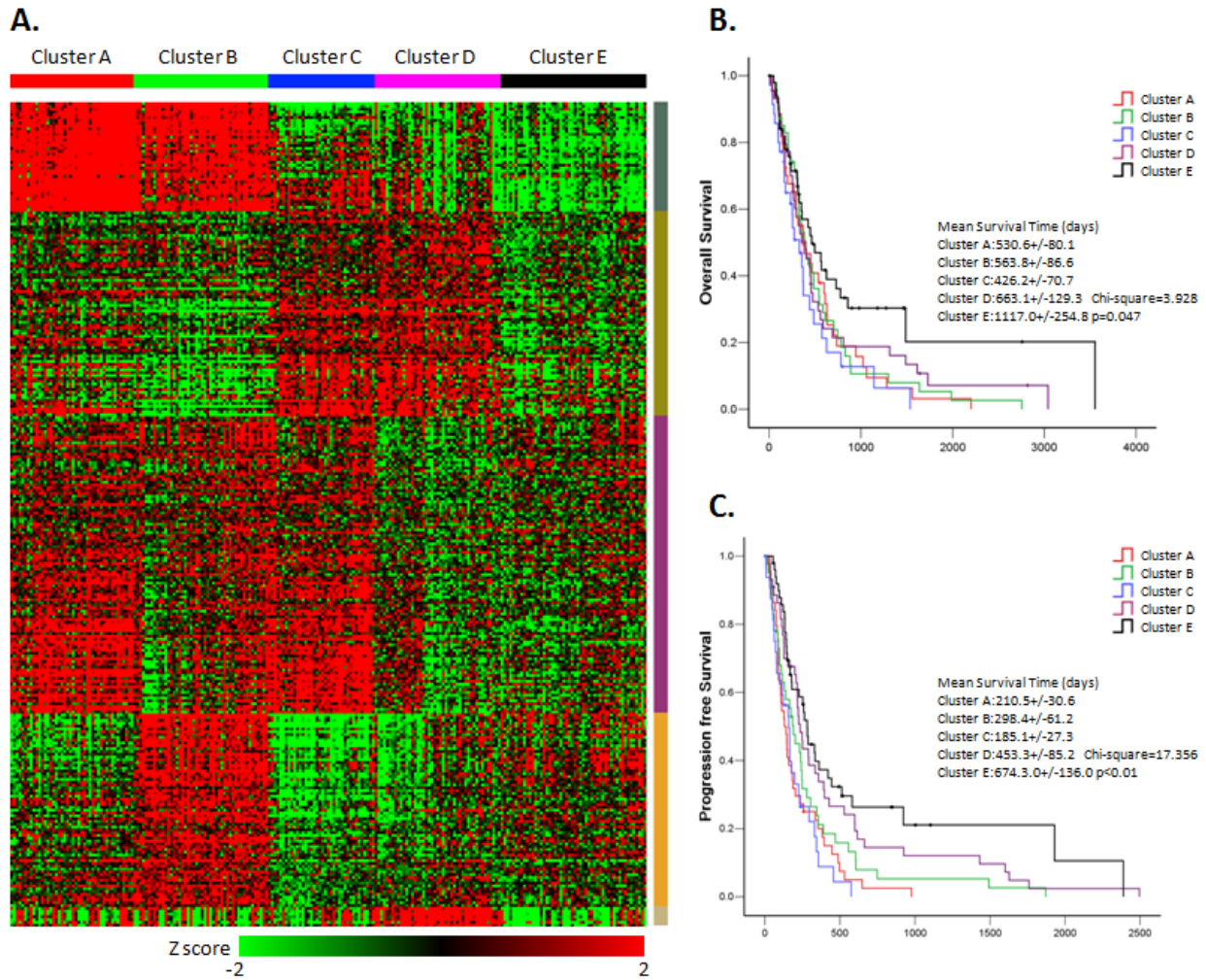
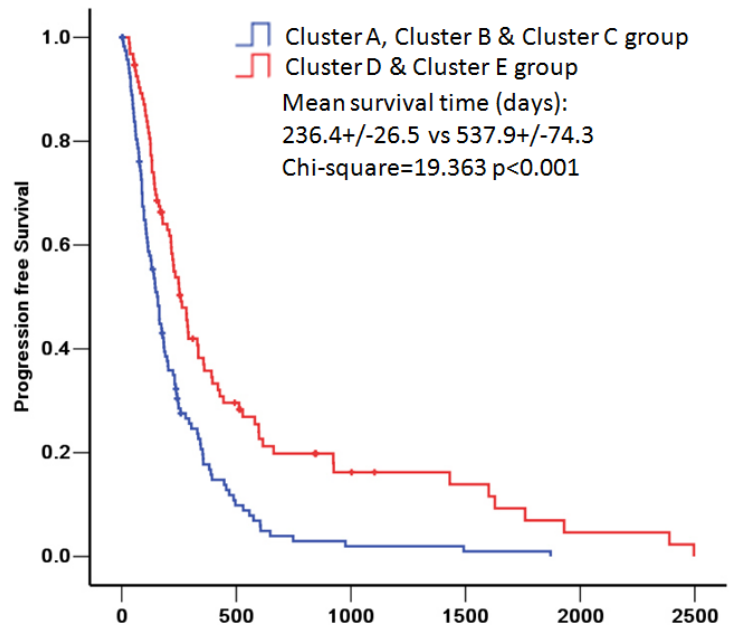
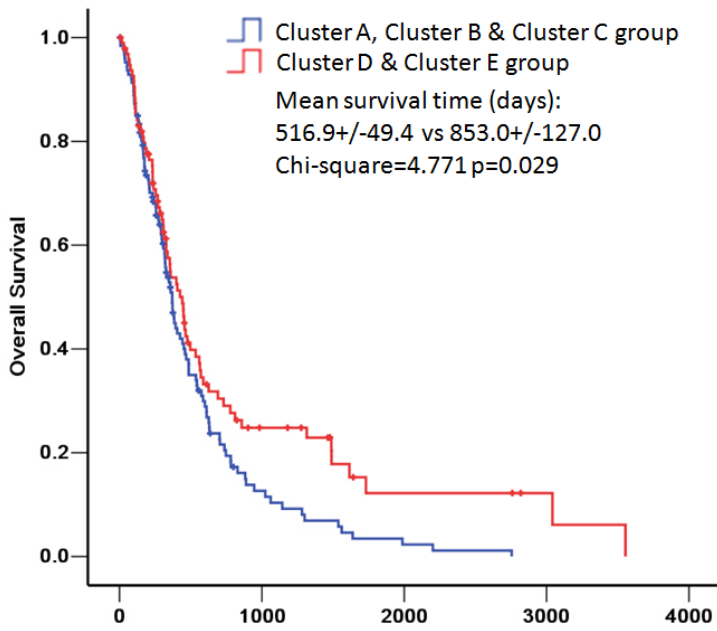


Supplementary Figure 1. The top 50 negatively enriched KEGG pathways in glioblastoma.





Supplementary Figure 3. (A) Differently enriched KEGG pathways identify five subtypes in Rembrandt dataset for validation. The same pathway order from TCGA samples was maintained in this validation set (n=228). (B,C) Kaplan-Meier estimates the overall survival and progression-free survival of patients with five subtypes in Rembrandt dataset.



Supplementary Figure 4. Kaplan-Meier estimates of overall survival and progression-free survival in patients with combined pathway enrichment clustering groups in Rembrandt dataset. Left panel: overall survival. Right panel: progression free survival.